



Fletcher Road, London, W4 5AS

£525,000

WHITMAN & CO.

SALES · LETTINGS · COMMERCIAL

- Two/three bedrooms
- 788 sq ft of accommodation
- Private front door

- Bright and spacious maisonette
- Sought after residential road
- Freehold

Tenure - Leasehold
 Length of lease - 944 Years remaining
 Ground Rent - £12 pa
 Service Charge - £0
 Local Authority - Ealing
 Council Tax - Band D

THE PROPERTY

This unique two/three-bedroom maisonette offers versatile living space within a rare stand-alone property.

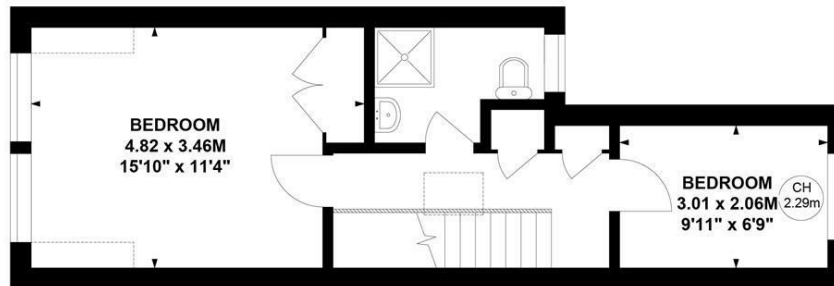
Accessed via a private front door, the home features a bright 13'10" reception room, a well-appointed fitted kitchen, a shower room, and two/three bedrooms. Spanning 778 sq ft, the property enjoys excellent natural light throughout and offers adaptable accommodation suited to a variety of lifestyles.

This maisonette is ideally positioned on a sought-after residential street, within close reach of excellent transport links and a wide array of local amenities.

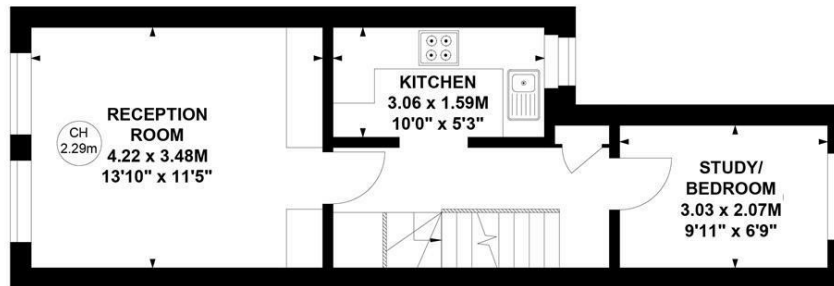
Fletcher Road, W4

Approximate Gross Internal Area
 72.24 sq m / 778 sq ft

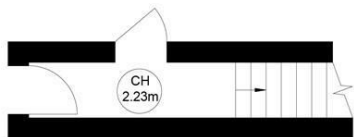
Key :
 CH - Ceiling Height



Second Floor



First Floor



Ground Floor

Not to scale, for guidance only and must not be relied upon as a statement of fact.
 All measurements and areas are approximate only

SITUATION



5-7 Turnham Green Terrace, Chiswick, London, W4 1RG

Tel 020 8747 8800

E-mail sales@whitmanandco.com

Website www.whitmanandco.com

